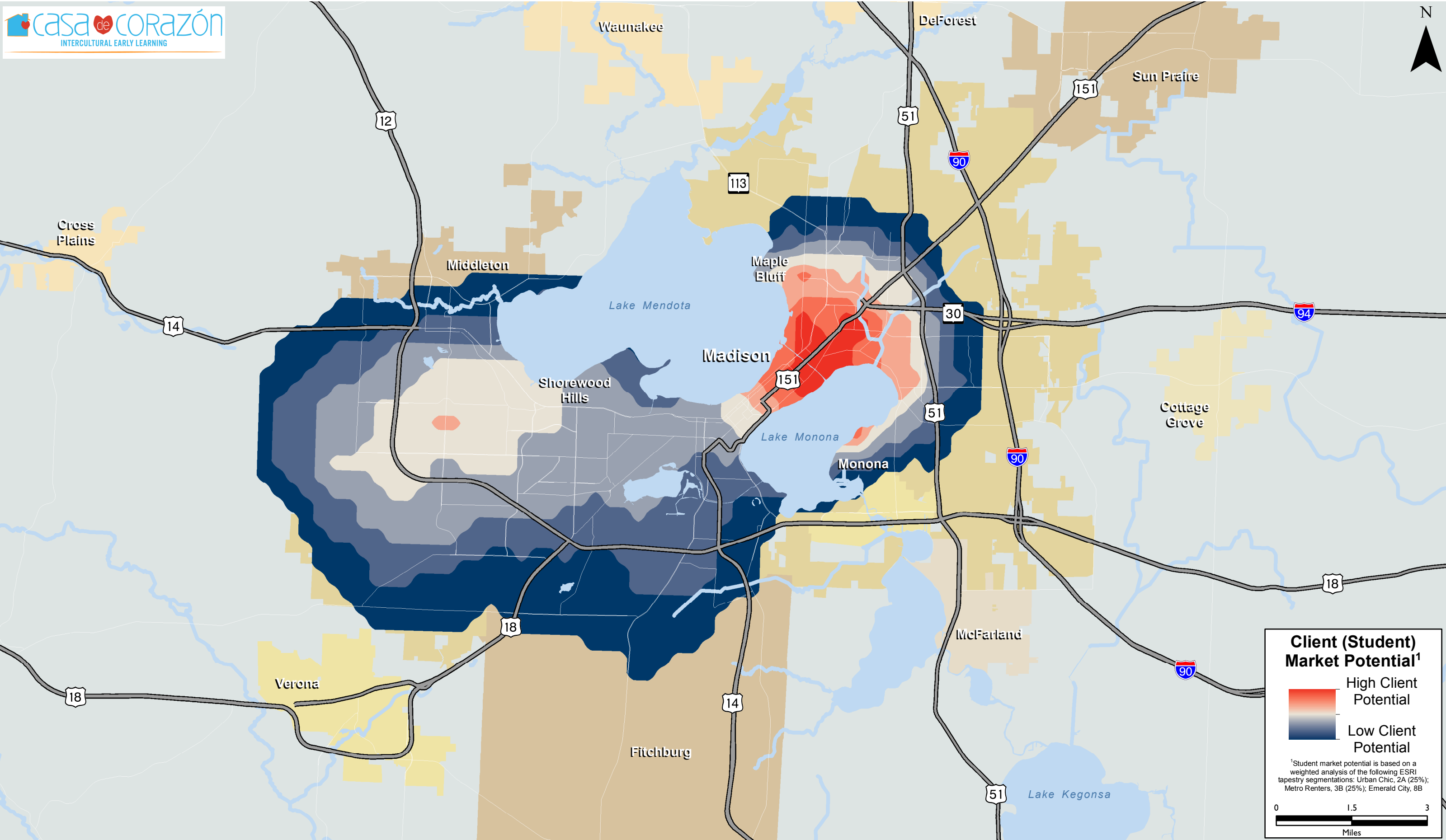


Madison, WI - MSA



Client (Student) Market Potential¹

High Client Potential

Low Client Potential

¹Student market potential is based on a weighted analysis of the following ESRI tapestry segmentations: Urban Chic, 2A (25%); Metro Renters, 3B (25%); Emerald City, 8B

0 1.5 3
Miles

I:\INFO\ArcMap\Brokers\Office\John_McCarthy\CasaCorazon\Workspace\Madison.mxd
Sources: Cushman & Wakefield/NorthMarq, ESRI, LandisCor, Neamap copyright 2015
The data used for this graphic has been obtained from sources which we deem reliable. While every effort has been made to report accurate data, Cushman & Wakefield/NorthMarq cannot guarantee the accuracy. Furthermore, we cannot assume responsibility for any omission of data which may occur. It is the responsibility of the user to undergo independent verification before using this graphic for business and/or financial decisions.